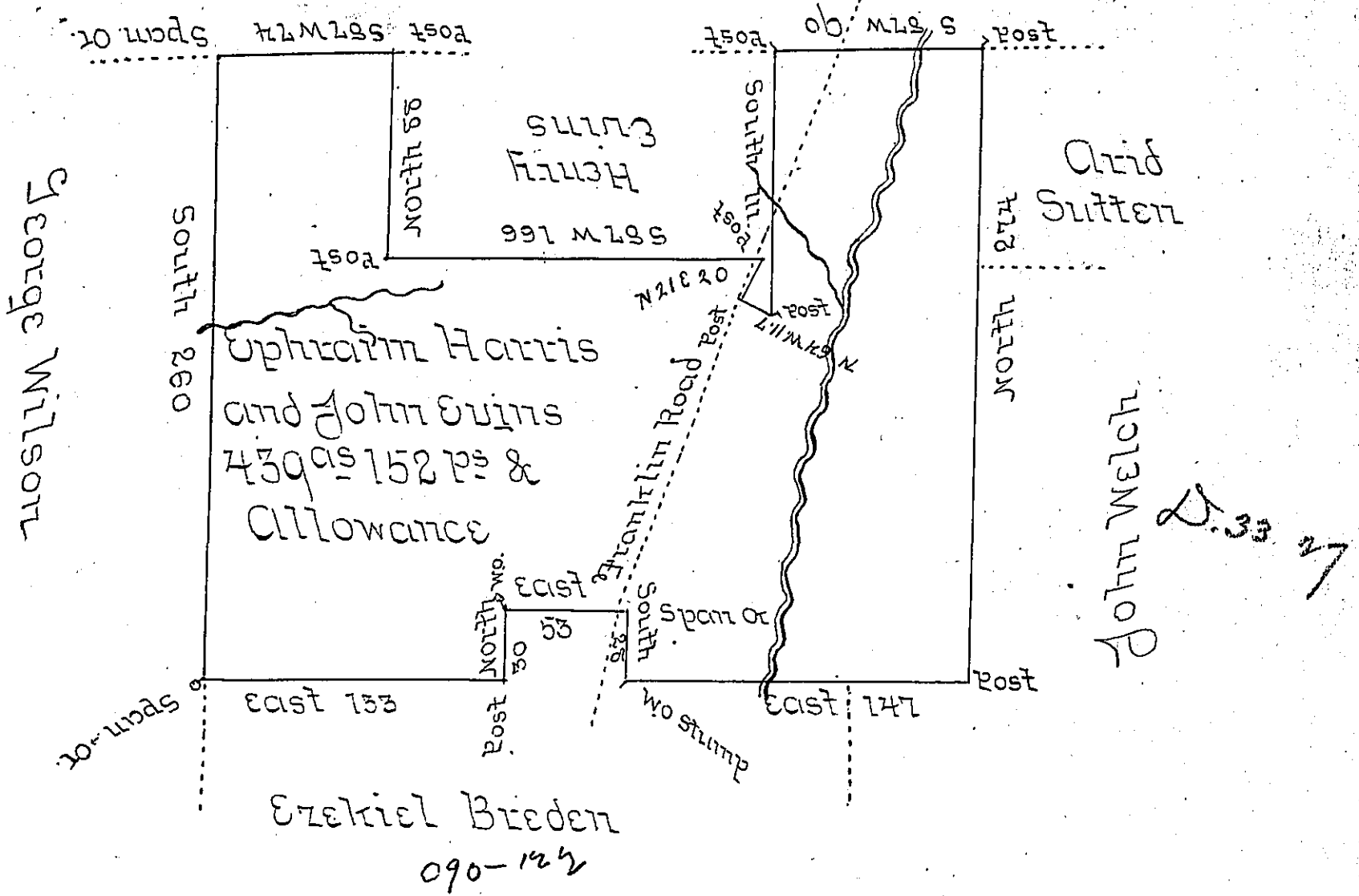


Donation Land



The above is a draught of a tract of land which was surveyed to Ephraim Harris and John Swins on the 5<sup>th</sup> day of June 1504 containing four Hundred and thirty Nine Acres & 152 perches and Allowance of six per Cent & including their actual Settlement and improvement situate on Road leading from Pittsburgh to Franklin in Slippery Rock Township Butler County

Jas Irvine U.S.

To Samuel Cochran Esquire  
 Surveyor General of Pennsylvania

The Warrant for the above is dated 25<sup>th</sup> May 1504

IN TESTIMONY that the above is a copy of the original remaining on file in the Department of Internal Affairs of Pennsylvania, made conformably to an Act of Assembly approved the 16th day of February, 1833, I have hereunto set my Hand and caused the Seal of said Department to be affixed at Harrisburg, this ninth day of February 1905.

*Loac R. Perry*  
 Secretary of Internal Affairs